



## GIAC Boost Controller Option

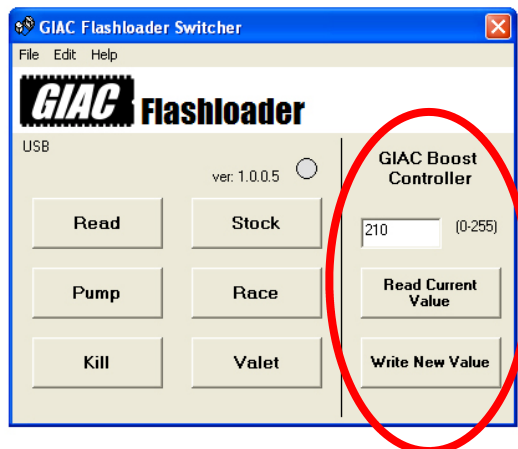
**PLEASE NOTE: GIAC Boost Controller software allows you to increase the boost levels of your RSK04 fueling kit. If your K04 turbos were purchased through AWE Tuning or one of our authorized dealers, use of GIAC Boost Controller to increase boost beyond RSK04 default levels will result in VOIDING OF WARRANTY on the turbo portion of the kit. Increasing boost beyond the RSK04 default settings can result in turbo and engine damage. INCREASING BOOST THROUGH THE USE OF THE GIAC BOOST CONTROLLER IS DONE AT YOUR OWN RISK. By writing a new boost level value to the fuel injection ECU via use of the GIAC Boost Controller software, the user acknowledges the possibility of engine or turbo damage and holds harmless AWE Tuning of any related claims.**

To successfully operate the GIAC Boost Controller, you will need Boost Controller capable RSK04 performance software installed in your ECU (see the Orderform in our Fueling Kit Install Manual for ordering information) , A PC with a Windows™ operating system, and a USB or serial port OBD2 communication cable (Ross-Tech® recommended). A laptop is preferable to a desktop PC because of its mobility, however a desktop PC will work with an extension cable.

Download the GIAC Boost Controller software from this location on the internet:

[http://www.giacusa.com/downloads/flash\\_loader\\_switcher\\_full\\_105.zip](http://www.giacusa.com/downloads/flash_loader_switcher_full_105.zip)

Unzip and install the contents of the file on your PC or laptop. With your PC or laptop connected to your car via the OBD2 communication cable, turn the car's key to the "on" position. Open the GIAC Boost Controller software program. The Boost Controller panel is circled in red on the screenshot below:



To read in the default boost setting of the RSK04 software upon initial use, press the "Read Current Value" button. In order to be able to revert back to default boost setting, make a note of this value. Enter a higher value number to increase boost or a lower value to reduce boost. Press the "Write New Value" button to send this command to the ECU. **A higher or lower value will change the boost levels throughout the entire rpm range. We highly recommend the use of a scan tool (Ross-Tech® recommended) and boost gauge to closely monitor any changes you make to the boost levels.**