

Congratulations on your purchase of the highest flowing, most exquisitely designed and constructed Audi S4 exhaust system on the market.

Please review the following instructions and warranty information carefully. While the install is relatively straightforward, pay close attention to the details and you will be ensured of rattle and leak free operation.

Installation of the Twin1 and Twin2 can be completed on jack stands or ramps. Never work under a vehicle only supported by a jack. If you do not feel comfortable installing this system yourself, contact a local professional for installation.

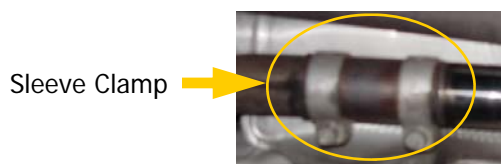
Parts list:

- 1 AWE Tuning Twin1 or Twin2 exhaust system in 2 sections
- 2 Stainless steel band clamp
- 1 Exhaust hanger bracket extension
- 2 8mmx1.25 nut
- 4 Serrated washer
- 1 4" length of heat protection tape

Required tools:

- 1 Socket wrench (or impact gun)
- 1 17mm socket
- 1 13mm deep socket
- 1 6" socket extension
- 1 Torx T45 bit
- 1 Hammer
- 1 Rubber mallet

Explanation of terminology:



Front of car



Passenger side

Step 1: Remove current exhaust system. The AWE Tuning Twin1 and Twin2 systems use all the factory exhaust hangers and hardware. Note the position of the hangers and hardware before removing.

NOTE THE ORIENTATION OF THE FACTORY REAR HANGER/CARRIER ASSEMBLIES. IF THEY ARE REINSTALLED FLIPPED 180 DEGREES FROM THEIR ORIGINAL POSITIONS, THE EXHAUST TIPS WILL SIT OFF-CENTER.

Note that while the Twin2 system is pictured, install for the Twin1 is identical.

Step 2: Because of the tight confines and temperature related system growth, the passenger side tube will come close to the fuel tank vapor purge line when extremely hot, like at a track event. To prevent melting of this plastic line, wrap the bend of the line with the enclosed self ad-



Step 3: Remove the heat-shield above the rear muffler area, held on by 4 10mm nuts at points A in Figure 1.

Pop the black plastic fuel tank vapor purge line out of clips B and C in Figure 2.

Rotate clip B as in Figure 2.

Push the line into clip B and leave clip C unused.

Reinstall the heat shield.

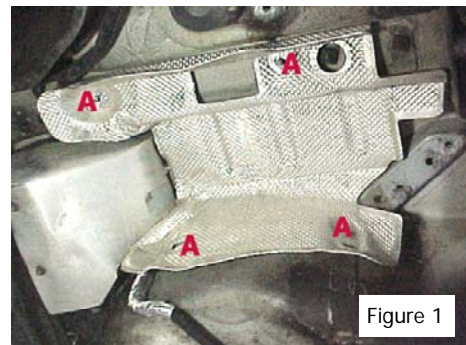


Figure 1

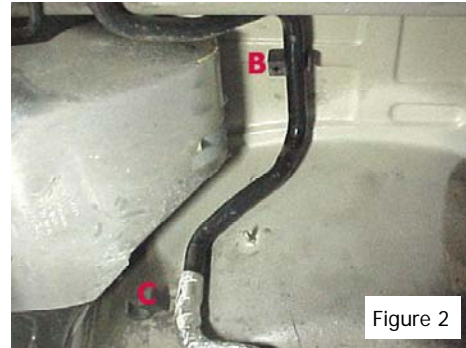


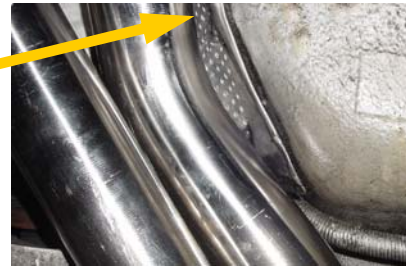
Figure 2

Front of car



Passenger side

Step 4: Install the front section of the Twin2, reusing the factory downpipe sleeve clamps. If you have **AWE Tuning downpipes** installed, loosen the ball joint bolts just enough to allow the cat sections to "relax". Slide the front section into the factory sleeve clamps until there is just a few millimeters clearance between the tunnel heat shield and the driver side tube at this point:



Leave the sleeve clamps loose at this

The exhaust will grow longer as it heats up, moving the passenger side tube closer to the diff cross member, so make sure the tubing is positioned as described.

Step 5: With the front section supported, bolt the front hanger bracket extension to the body, using the factory bolts.



Step 6: Slip the factory rubber hanger onto the exhaust post. Loosely fasten its carrier to the extension with the enclosed 8mmx1.25 nuts.



Front of car



Passenger side

Step 7: Install the rear section of the exhaust, with the enclosed band clamps oriented like this:

Do not tighten the clamps at this time.

Tap on the rear section with the rubber mallet to ensure that rear section is slid into the front sec-



Step 8: Slip the middle rubber hanger onto its post. Loosely fasten its carrier to the rear diff cross member with the factory bolts.

Slip both rear rubber hangers onto their posts. Loosely fasten their carriers to the car body with the factory bolts.

Ensuring that the rear section is fully slid into the front section, fully tighten down the band clamps, preferably with an impact gun. A good tight seal here will ensure no leaks. ENSURE THAT REAR HANGER CARRIERS ARE REINSTALLED AS DETAILED IN STEP 1.



Step 8: Working from the rear, begin gradually tightening down the hanger carriers. Note that the bolt holes through the carriers are slotted to allow lateral exhaust alignment. Align the carriers so that the exhaust tips sit visually centered in the rear valance cut out. *Make sure that all the rubber exhaust hangers are fully slid onto their posts and that the front and middle ones are slightly angled towards the front of the car to allow for system growth when hot.*

Once you have verified that the tips are visually centered, fully tighten down all the hanger carriers (and ball socket bolts if equipped with AWE Tuning downpipes). Carefully inspect all clearances. 3-4 millimeters of clearance between the exhaust and the various heatshields is sufficient. Adjust carriers and massage heatshield clearances as necessary.

Attention to detail at this point is the key to success!

Front of car



Passenger side

Step 10: Once the tips are visually centered and all the hanger carriers are tightened down, tap the serrated washers on all the exhaust posts to keep the rubber hangers from sliding on the posts. Use a hammer to tap the washers on gradually.



Step 11: With the vehicle still supported, start the engine and check for exhaust leaks or rubbing issues. Correct as necessary.

Please note that the exhaust system can grow up to 1.5" longer when very hot, which will make the tips stick out further from the bumper than when cold. This is normal.

If you have any questions regarding the installation or performance of this product, please do not hesitate to contact us:

AWE Tuning
1-888-565-2257
215-658-1670
Sales@awe-tuning.com



AWE Tuning
2385C Maryland Road
Willow Grove, PA 19090
215-658-1670
sales@awe-tuning.com

Thank you for choosing A.W.E. Tuning as your performance automotive parts supplier. Please remember that a performance car is only as strong as its weakest link. Therefore, it is vital that you maintain your vehicle to factory specifications.

By installing or using the purchased product, the Consumer accepts this warranty and any specific Manufacturer warranties enclosed.

Limited Warranty

The following warranty is valid only in the United States.

The Manufacturer's full warranty applies to all products sold.

Secor Ltd. (A.W.E. Tuning) warrants to the original retail purchaser (Consumer) this product (Twin1 and Twin2 S4 exhaust) against defects for LIFETIME.

Upon verification of warranty coverage, A.W.E. Tuning will repair or replace the defective product at their discretion, without charge. This is the only remedy the Consumer has for any loss or damage, however arising, due to nonconformity in or defect of the product. This warranty does not cover consequential damage, loss of time or revenues, inconvenience, loss of use of vehicle, damage to the vehicle or components, or other incidental or indirect damage.

All warranties are void if the product was not installed by a certified auto mechanic, improperly serviced, modified, or used in a way not intended by the Manufacturer. Use of product in Motorsports or Racing conditions is grounds for warranty denial. Motorsports and Racing is an inherently abusive operational condition, and it is impossible to warranty for this type of usage.

The Consumer is responsible for ensuring that the product is installed in a safe and proper manner, and should cease usage of the product immediately if an unsafe or improper condition is noted. If an unsafe or improper condition is noted, the Consumer should then immediately contact the facility where the product was installed or A.W.E. Tuning directly.

Please contact the original place of purchase for any warranty claims or explanations of this document.