



## *INSTALLATION GUIDE*

### ***2010+ Audi A4 Quad Outlet Exhaust Valance For Non S-Line Rear Bumper***

Congratulations on your purchase of the AWE Tuning Carbon Fiber Valance for the 2010+ Audi A4 with Quad Outlet Exhaust. Exquisite build quality distinguishes this valance from all others.

***Contact us with any installation questions.  
215-658-1670  
AWE-Tuning.com  
performance@AWE-Tuning.com***

## PARTS LIST

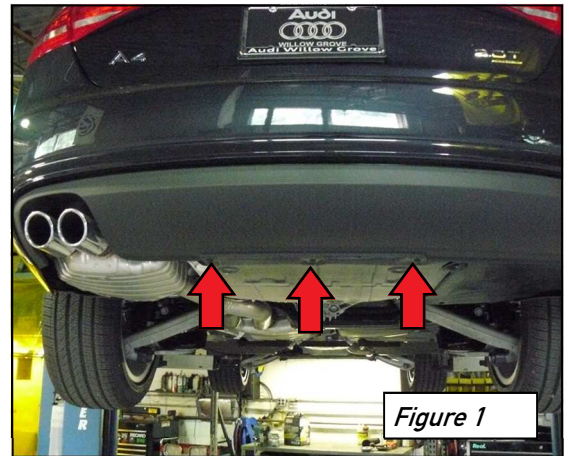
- 1 AWE Tuning carbon fiber valance
- 2 1" long plastic screws

### Required Tools

Small flat head screw driver  
T25 torx driver  
T20 torx driver  
10mm socket, 3/8 drive  
extension for 3/8 drive

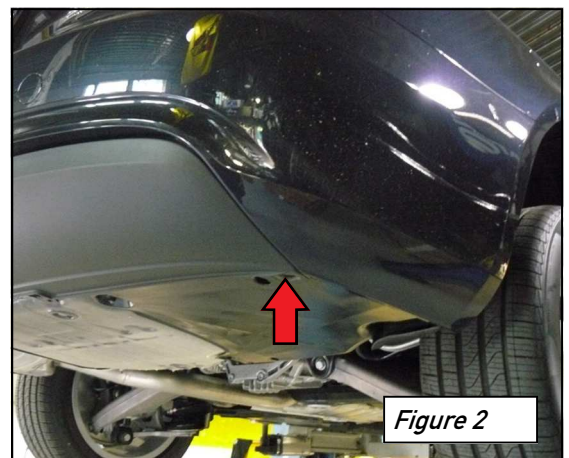
### Step 1

Raise the car and remove the three T25 torx screws on the underside of the factory valance, shown at arrows in **Figure 1**.



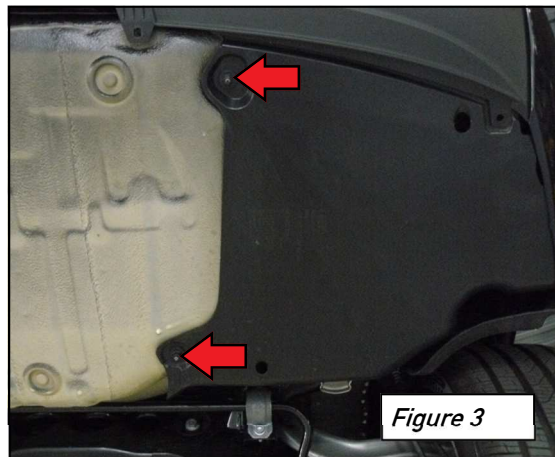
### Step 2

Remove the single pop rivet, shown at arrow in **Figure 2**, using a small flat head screw driver.



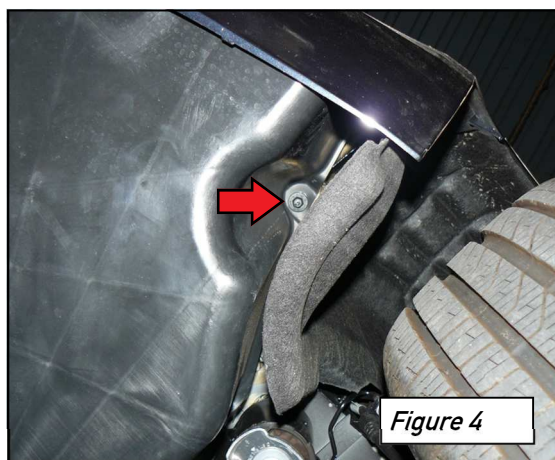
### Step 3

Remove the two 10mm plastic nuts holding on the plastic cover, at arrows in **Figure 3**.



### Step 4

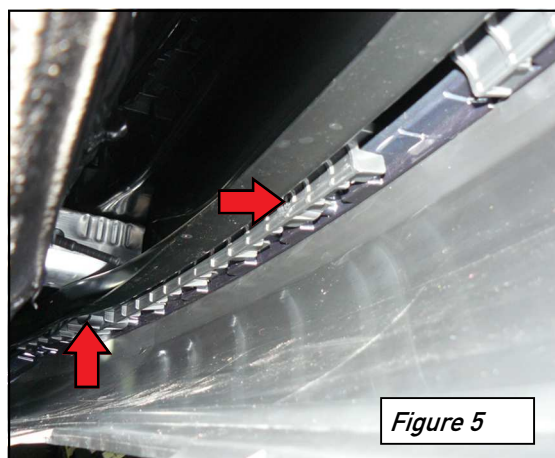
Remove the last 10mm plastic nut holding on the plastic cover, at arrow in **Figure 4**, and then remove the plastic cover.



### Step 5

For 2013+ cars remove from the plastic retainer the two passenger side T20 torx screws, at arrows in **Figure 5**, and then remove the retainer.

Do the same for the driver side.



## Step 6

Unclip the two passenger side clips holding the corners of the valance to the bumper.

Do the same for the driver side.

Starting on either side, unclip one by one all of the remaining retaining clips holding on the valance. It may help to use the flat head screw driver in releasing the clips.

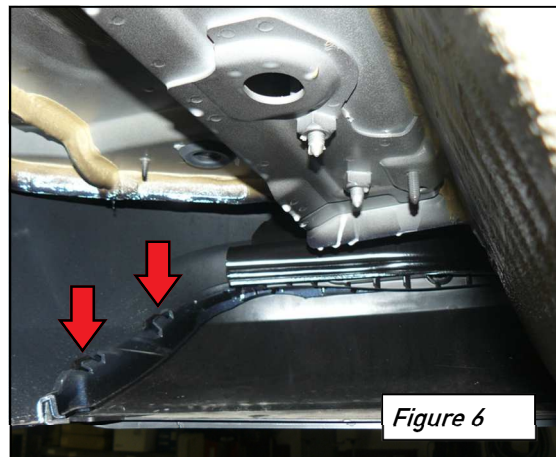


Figure 6

## Step 7

Installing the AWE Tuning Carbon Fiber Valance:

Align the retaining clips on the valance to the bumper and firmly push the valance into the bumper starting in the middle. Make sure each retaining clip is secured in its respective slot in the bumper.

Push in last the retaining clips in the corners where the valance meets the bumper, as shown in **Figure 7**.

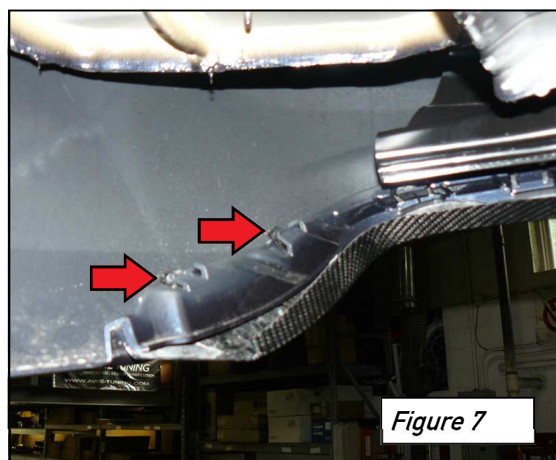


Figure 7

## Step 8

Thread the supplied plastic screws through the bumper and into the valance, securing the lower corners in place as shown in **Figure 8**.

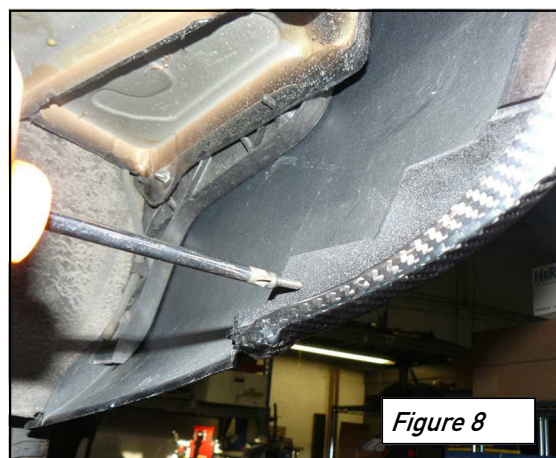
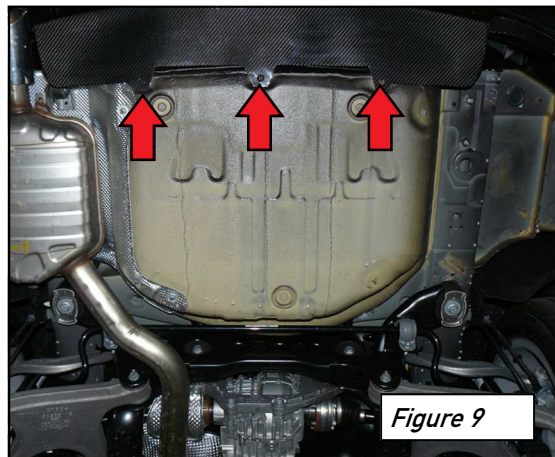


Figure 8

## Step 9

Re-install the factory T25 torx screw into the bottom of the valance, starting with the middle screw.



**ENJOY**

Please note that the AWE Tuning Carbon Fiber Valance for Quad Outlet Exhausts is designed to work with the AWE Tuning Quad Outlet Exhausts, and fitment with other brand exhausts is not guaranteed. Further, this valance will not fit S-Line style factory bumpers.



Any questions or comments,  
please do not hesitate to contact us:  
215-658-1670  
AWE-Tuning.com  
performance@AWE-Tuning.com



AWE Tuning  
199 Precision Dr  
Horsham, PA 19044  
215.658.1670  
sales@awe-tuning.com

Thank you for choosing AWE Tuning as your performance automotive parts supplier. Please remember that a performance car is only as strong as its weakest link. Therefore, it is vital that you maintain your vehicle to factory specifications.

**By installing or using the purchased product, the Consumer accepts this warranty and any specific Manufacturer warranties enclosed.**

## Limited Warranty

The following warranty is valid only in the United States.

The Manufacturer's full warranty applies to all products sold.

Secor Ltd. (AWE Tuning) warrants to the original retail purchaser (Consumer) this product (Audi B8/B8.5 A4 Carbon Fiber Valance) against manufacturing defects for ONE YEAR from date of original purchase.

Upon verification of warranty coverage, AWE Tuning will repair or replace the defective product at their discretion, without charge. This is the only remedy the Consumer has for any loss or damage, however arising, due to nonconformity in or defect of the product. This warranty does not cover consequential damage, loss of time or revenues, labor costs, shipping costs, inconvenience, loss of use of vehicle, damage to the vehicle or components, or other incidental or indirect damage.

All warranties are void if the product was not installed by a certified auto mechanic, improperly serviced, modified, or used in a way not intended by the Manufacturer. Use of product in Motorsports or Racing conditions is grounds for warranty denial. Motorsports and Racing is an inherently abusive operational condition, and it is impossible to warranty for this type of usage.

The Consumer is responsible for ensuring that the product is installed in a safe and proper manner, and should cease usage of the product immediately if an unsafe or improper condition is noted. If an unsafe or improper condition is noted, the Consumer should then immediately contact the facility where the product was installed or AWE Tuning directly.

Please contact the original place of purchase for any warranty claims or explanations of this document.